

CREATIVE PARK

<http://www.canon.com/c-park/>

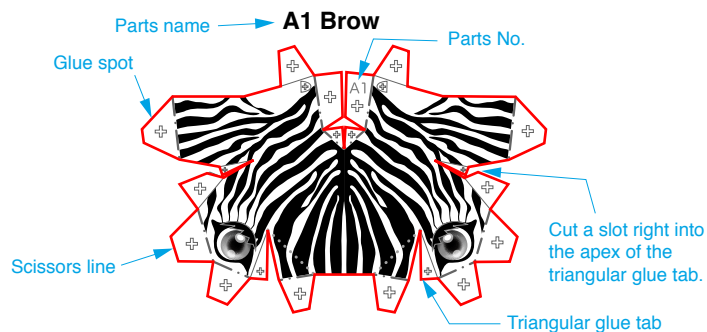
Zebra



A Assemble the head and neck

Use pattern: Page2/Page3.

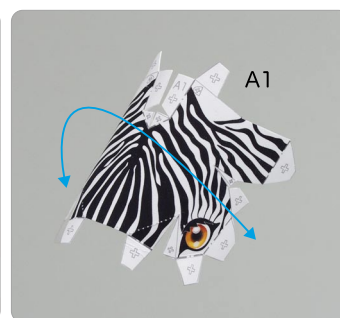
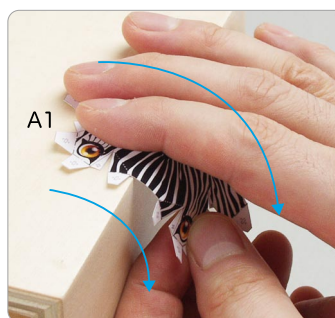
- ① Cut out A1 by cutting along the lines.
- ★ Cut along the line marked —.



- ② Make a mountain fold and valley fold on A1.
- ★ Trace along the mountain fold line and valley fold line with a pencil, scoring it to make it easier to fold.



- ③ The parts will be easier to assemble if curled.
- ★ Using the photo as a guide, move your fingers in the direction of the arrow, adjusting the pressure to curl the paper.



Tools	Notation Key
Scissors	— Scissors line
Paste, or woodwork glue Mountain fold
Stencil pen, or bodkin	- - - - - Valley fold
Ruler	+ Glue spot
Pencil	⊙ Glue reverse side
	A1, B1 Parts No.

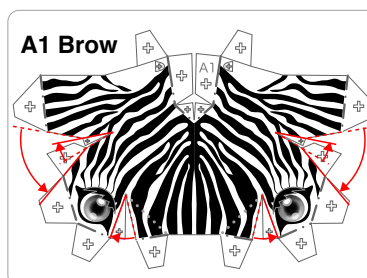
◆ The Assembly instructions are divided into four blocks: A (head and neck), B (body), and C (legs and back). Follow the instructions for each block to assemble your zebra.

◆★ marks a basic assembly technique that remains the same regardless of the part. Instructions are printed only for the first instance.

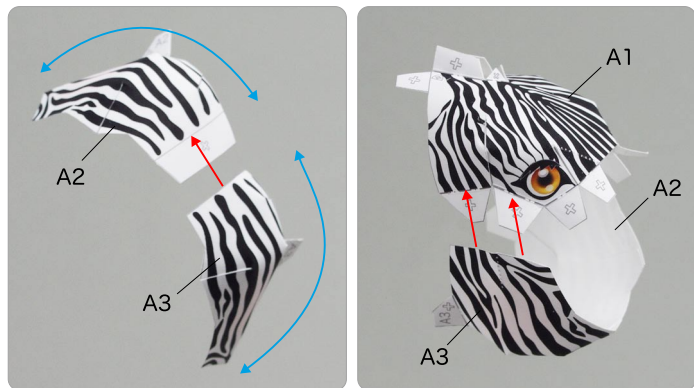
<Caution>

- ✘ Keep scissors and glue away from small children.
- ✘ Be careful not to cut your fingers when using scissors.

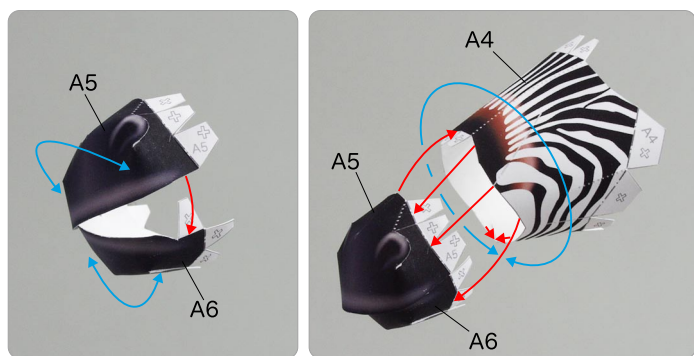
- ④ Add a slight curl to A1 when attaching it.
- ★ Attach the triangular glue tabs so that the front side becomes convex.
- ★ Using the photo as a guide, attach in the direction of the arrow.



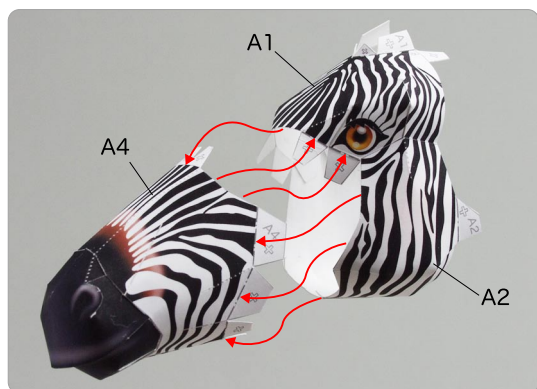
5 Attach A2 and A3 together, and attach A1.



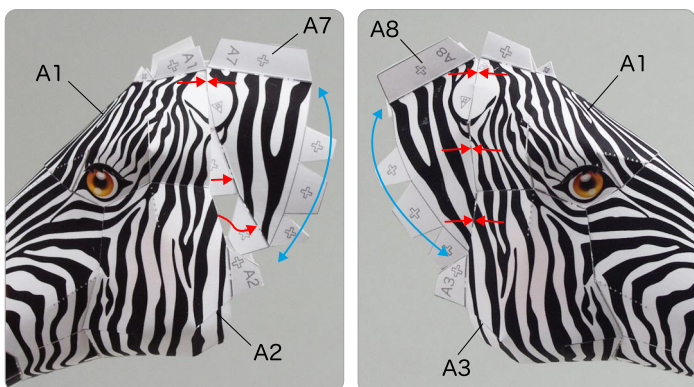
6 Attach A5 and A6 together, and attach A4.



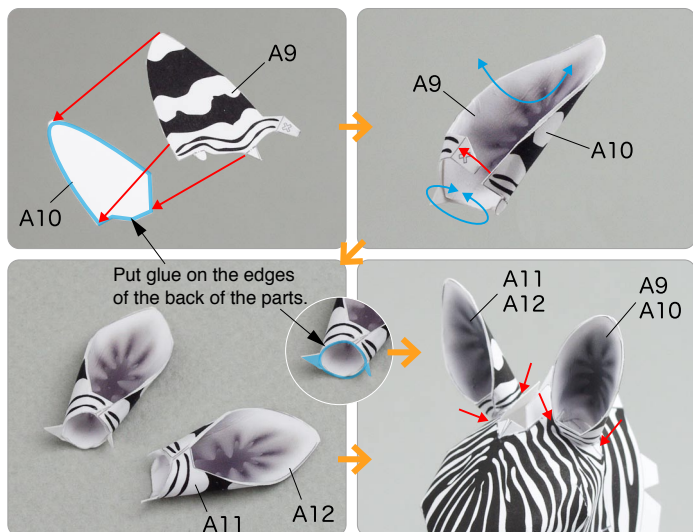
7 Attach A4 to the head.



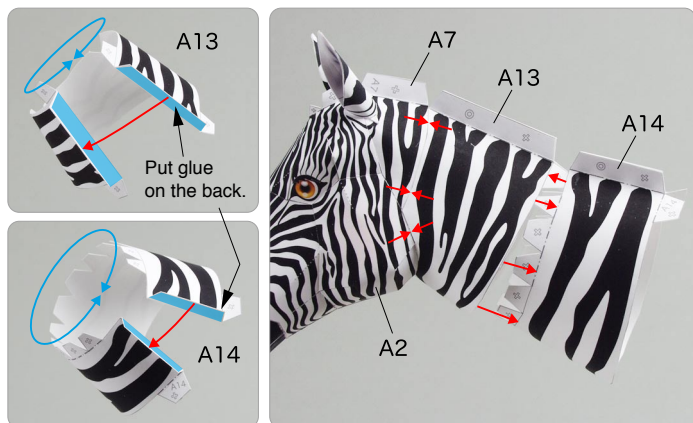
8 Attach A7 and A8 to the head.



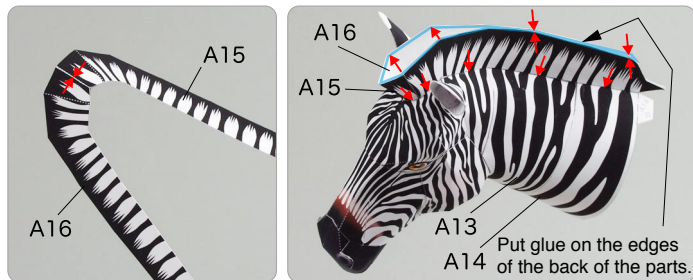
9 Glue and assemble A9, A10 and A11, A12. Next, attach them to the head.



10 Assemble A13, A14 and attach them to the Head in order.



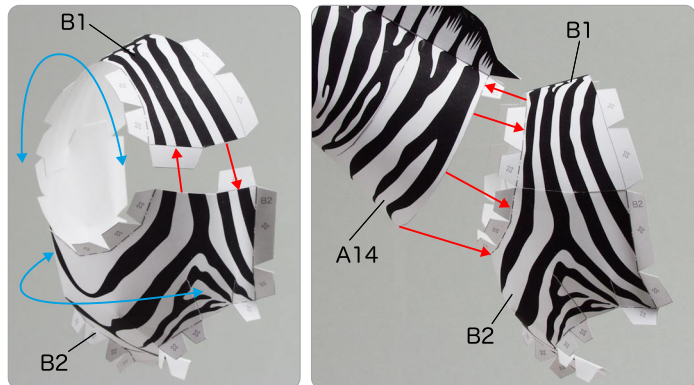
11 Assemble A15 and A16, attach them to the neck, and the head is complete.



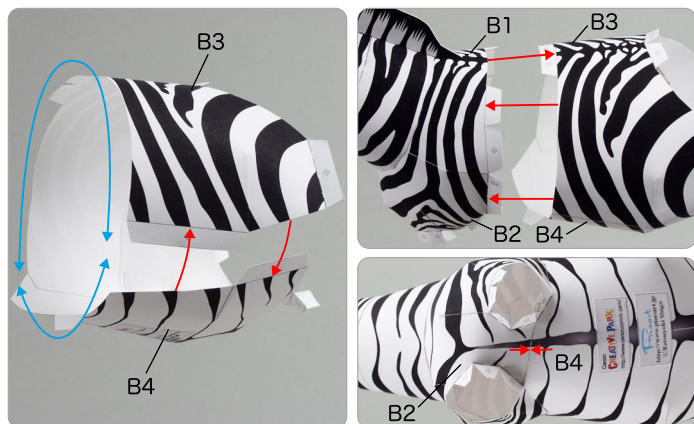
B Assemble the body

Use pattern: Page4/Page5.

① Assemble B1 and B2, and attach it to the neck.



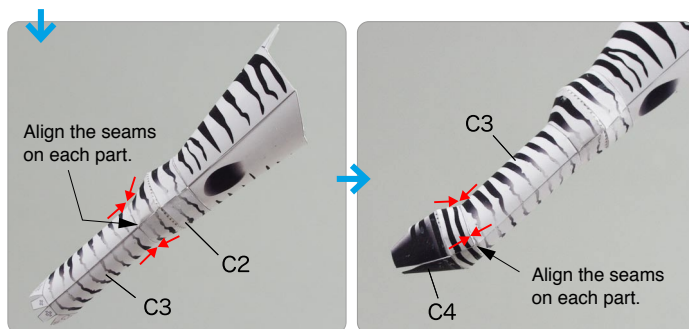
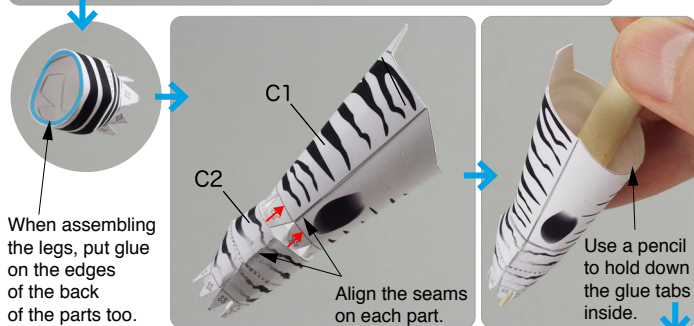
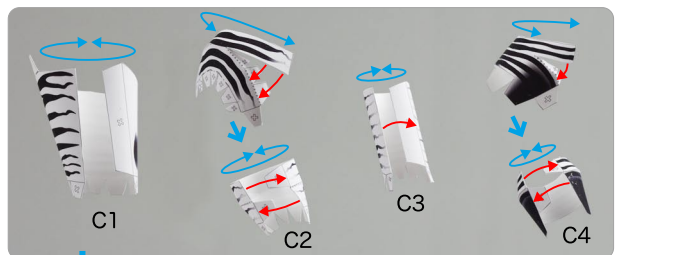
② Attach B3 and B4 together, and attach B1, B2.



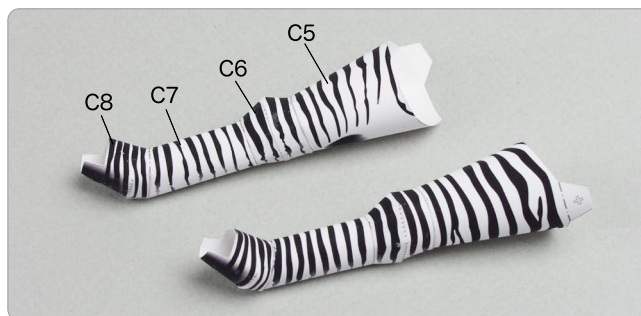
C Assemble the legs and back

Use pattern: Page6 to Page8.

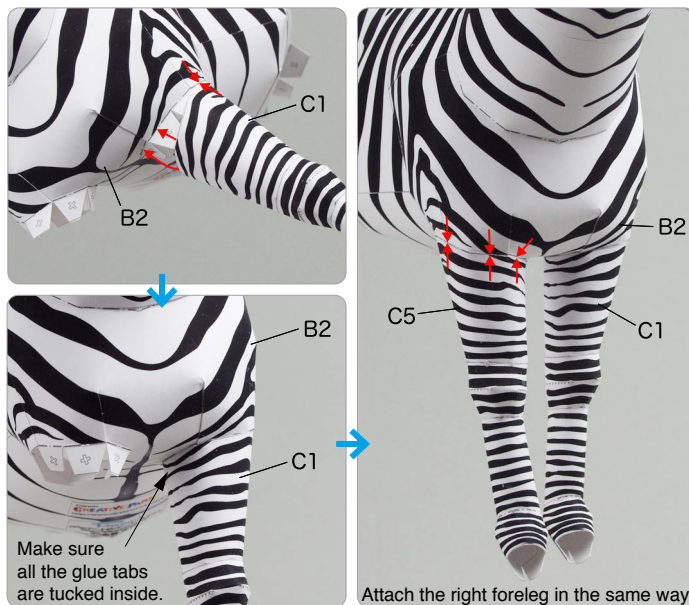
① Assemble parts C1/C2/C3/C4, and attach them in order.



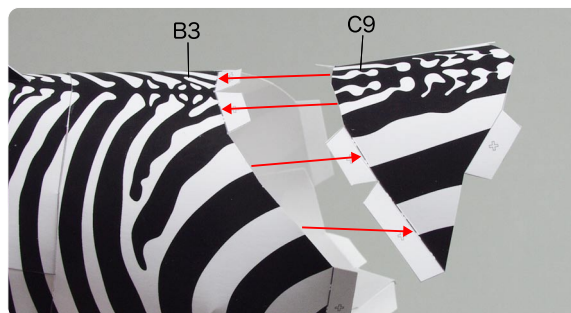
② Assemble parts C5/C6/C7/C8 in the same way.



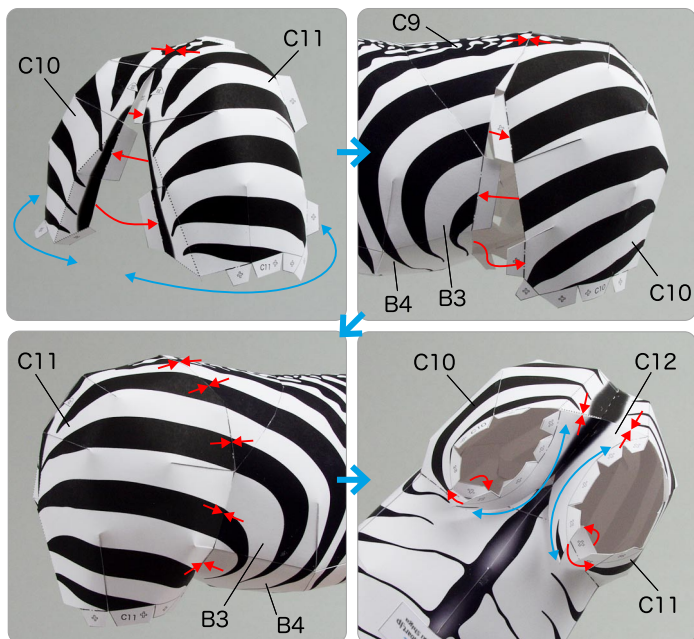
③ Attach these legs to the shoulders.



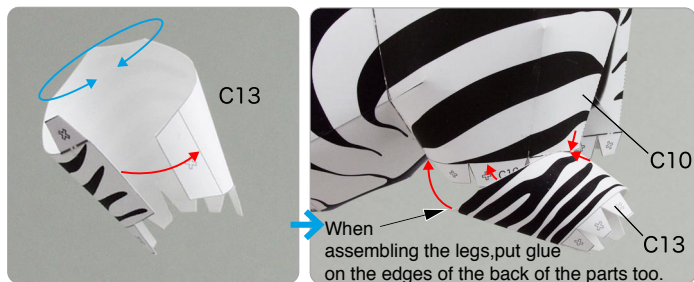
④ Assemble C9 to B3.



5 Assemble C10 and C11, and attach to the body.
Next, assemble C12.



6 Assemble C13, and attach it to C10.



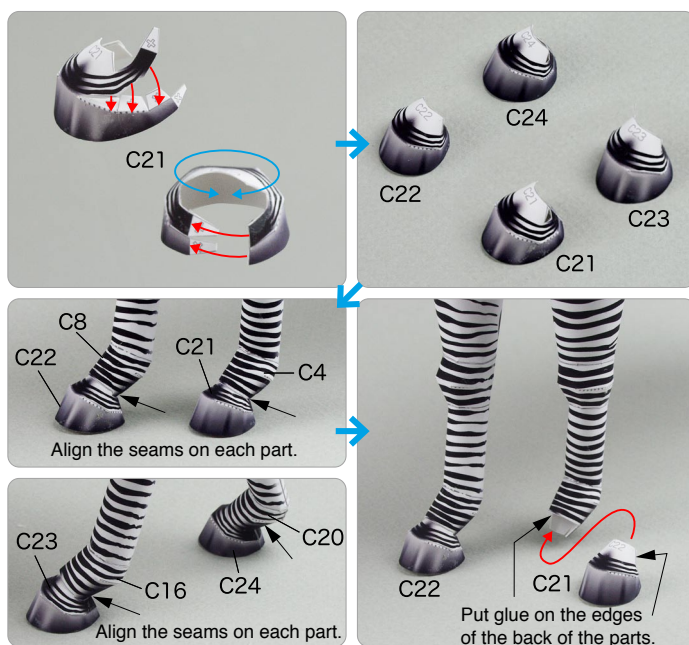
7 Assemble C14, C15 and C16,
and attach them together in order. Next, attach them to C13.
Align the seams on each part.



8 In the same way, assemble C17, and C18, C19 and C20,
and attach them to the body.



9 Assemble C21, C22, C23 and C24. Place the hooves
on the ground, without adding any glue. Attach the body
to the hooves, taking care to balance it so that it is straight.



10 Assemble C25, and attach to the body,
and your zebra is complete!

